

# CW Series CruiserWeight

## Product Specifications



### DESIGN HIGHLIGHTS

- Patented design releases door panels upon impact from interior while providing security from exterior
- Heavy-duty single knockout track is pre-punched, full height 12 gauge galvanized steel
- Unique panel construction: impact resistant, 1 3/4" thick, insulated.
- Heavy-duty spring-loaded plungers on knockout panels eliminate high-maintenance roller wheels
- Panel-mounted dual side loop seal, Lintel brush seal, foam filled loop bottom weather seal. Optional bottom brush seal available in addition to standard seal
- Torsion spring counterbalance system rated for 15,000-cycle minimum. Higher cycle torsion springs or counterweight system available
- One TKO lock for security or knockout provisions
- Black grip door lift handle, two standard per door

### DOOR SIZE

Opening Width \_\_\_\_\_ in / cm      Opening Height \_\_\_\_\_ in / cm

### PROJECT INFORMATION

JOB NAME \_\_\_\_\_

ADDRESS \_\_\_\_\_

GENERAL CONTRACTOR \_\_\_\_\_

DISTRIBUTOR \_\_\_\_\_

MODEL \_\_\_\_\_

QUANTITY \_\_\_\_\_

VOLTAGE/PHASE \_\_\_\_\_

### CERTIFIED FOR CONSTRUCTION

BY \_\_\_\_\_

COMPANY \_\_\_\_\_

ADDRESS \_\_\_\_\_

DATE \_\_\_\_\_

**OPTION**

Wind Load Package

**TRACK**

Steel Track                       Impact-A-Track    3'    6'    Full Height  
 Double Knockout Header  
 C-Channel Spring Pad Mount

**PANEL**

Slide Lock    Left    Right    Dual  
 Non-Insulated  
 Knockout Lock                       Pilfer Proof Lock  
 Anti Drift Up Lock                       Anti Drift Down Lock  
 Single Pane Window                       Dual Pane Window  
 Full Vision Panel                       Clear                       Translucent  
 Powerhouse Panel                       Bottom    2nd    3rd    Full Door  
 Blade Lintel Seal  
 3" Bottom Brush Seal  
 Thermal Package

**COUNTERBALANCE**

Cycle Springs:    25k    50k    75k    100k  
 Counterweight System                       Solid Shaft Upgrade

**OPERATOR**

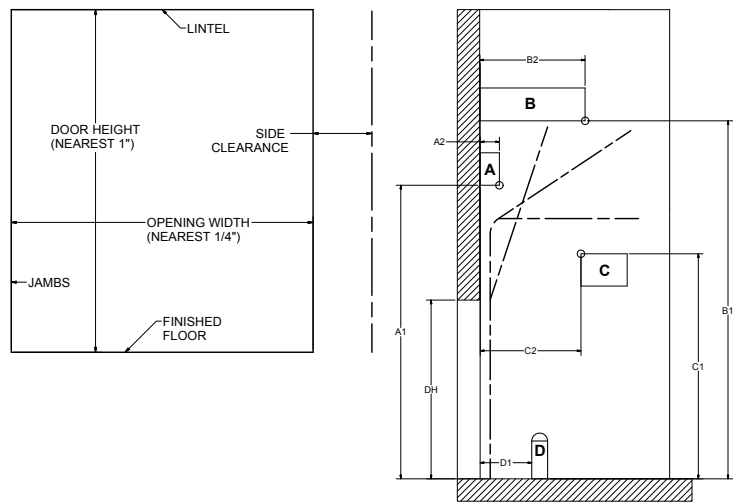
Manual Chain Hoist                       Auxiliary Trolley Chain Hoist  
 Model J Operator VAC \_\_\_\_\_ Phase \_\_\_\_\_  
 Model H Operator VAC \_\_\_\_\_ Phase \_\_\_\_\_  
 Model T Operator VAC \_\_\_\_\_ Phase \_\_\_\_\_  
 Primary Safety Features  
 Monitored Photo Eyes                       Monitored Safety Edge  
 Secondary Safety Features  
 Electric 2-wire Safety Edge                       Electric 4-wire fail safe Safety Edge  
 Pneumatic Safety Edge  
 Pull Cord Quantity \_\_\_\_\_  
 Car Wash Operator Upgrade  
 NEMA 4 Controls Upgrade

**DOOR OPENING DIMENSIONS & CLEARANCES**

Opening Width (To Nearest 1/4") \_\_\_\_\_  
 Opening Height (To Nearest 1") \_\_\_\_\_  
 Side Clearance Right \_\_\_\_\_ Side Clearance Left \_\_\_\_\_  
 Jamb Substrate/Mounting Surface Material: Specify Block, Masonry, Wood, Steel, Insulated Panel, Other \_\_\_\_\_  
 Upper \_\_\_\_\_ Lower \_\_\_\_\_

**OVERHEAD OBSTRUCTIONS & CLEARANCES**

Zone A Obs. Type: Conduit, Beam, Other \_\_\_\_\_  
 Dimension A1 \_\_\_\_\_ Dimension A2 \_\_\_\_\_  
 Zone B Obs. Type: Ceiling, Truss, Other \_\_\_\_\_  
 Dimension B1 \_\_\_\_\_ Dimension B2 \_\_\_\_\_  
 Zone C Obs. Type: Racking, Sprinkler, Other \_\_\_\_\_  
 Dimension C1 \_\_\_\_\_ Dimension C2 \_\_\_\_\_  
 Zone D Obs. Type: Bollard, Other \_\_\_\_\_  
 Dimension D1 \_\_\_\_\_



1. **General:** TKO Door's patented design releases door panels upon impact from interior while providing security from exterior.
2. **Track:** Heavy-duty single knockout track is pre-punched, full height, 12 gauge galvanized steel.
3. **Panel:** Unique panel construction. Impact resistant, 1.75" thick, insulated.
4. **Guide Pins:** Heavy-duty spring-loaded plungers on knockout panels, eliminate high maintenance roller wheels.
5. **Seals:** Panel-mounted dual side loop seal, Lintel brush seal, foam filled loop bottom weather seal. Optional bottom brush seal available in addition to standard loop.
6. **Counterbalance System:** Torsion spring counterbalance system rated for 15,000-cycle minimum. Higher cycle torsion springs or counterweight system available.
7. **Lock:** One TKO lock for security or knockout provisions.
8. **Handles:** Black grip door lift handle, two per door standard.
9. **Warranty:** TKO Dock Doors, a business unit of 4Front Engineered Solutions, Inc., warrants that every door, its hardware and fittings will be free of defects in workmanship and material. Should any defect in workmanship or material appear within ONE (1) year of shipment, TKO shall, upon notification, correct such non-conformity at its option, by repairing or replacing any defective part or parts. **This limited warranty does not include** normal wear, modifications, and damage beyond the manufacturer's control, replacement labor or implied cycle life of counter balance systems (cables, spring assembly, drums, shaft cones, shaft bearings or center bearing bracket).
10. **Panel Limited Warranty:** Door will remain operational after resetting from impact under normal use, service and maintenance for ONE (1) year (excluding any window portion thereof) from date of shipment. Does not cover punctures, cracks or slices in panel(s). Optional Super bottom panel: two-year performance limited warranty from date of shipment.
11. **Impact-A-Track Limited Warranty:** TKO Dock Doors warrants its Impact-A-Track™ for FIVE (5) years from date of shipment. This is for the Impact-A-Track portion only. Cuts, gouges and abrasions are not considered warrantable conditions.



**TKO Dock Doors**  
 N56 W24701 Corporate Circle Sussex,  
 Wisconsin 53089, USA  
 877.408.6788  
 www.tkodoors.com

TKO Doors reserves the right to change specifications and designs without notice and without incurring obligations. TKO Doors products may be the subject of one or more U.S. and/or foreign, issued and/or pending, design and/or utility patents. TKO Doors as word and logo are registered trademarks belonging to Entrematic Group AB or other companies controlled by the same organization. All rights reserved.