



DAMAGE-RESISTANT INDUSTRIAL DOCK DOORS



- IMPACTABLE DESIGN**
- RETRACTABLE PLUNGERS**
- PANEL-MOUNTED WEATHERSEAL**
- HEAVY-DUTY TRACK**
- ENERGY EFFICIENT**

EST. 1994



ENERGY EFFICIENCY ANALYSIS

How much money is falling through the cracks at your facility? You may not be able to see the energy loss, but TKO Dock Doors has the tools to show it to you. TKO Dock Doors offers a free Energy Efficiency Analysis at your location to assess your current situation and recommend solutions that will help increase energy efficiency as well as your bottom line.

Each Energy Efficiency Analysis includes:

- A statistical review of energy loss at each dock opening
- State-of-the-art thermal imaging to confirm gaps and energy loss
- Site-specific energy loss calculations and documentation
- Recommendations for service and/or replacement equipment

Contact a TKO Door Specialist to schedule your complimentary Energy Efficiency Analysis today.

Dock-Energy Loss Calculator

Customer Name: _____ Site: _____
 Distributor Name: _____
 Sale Rep Name: _____

4front
ENGINEERED SOLUTIONS

Thursday, June 02, 2011

Location
 State City

Facility Information
 Inside Temperature °F This facility is typically:
 Operating Hours/day hrs Heated
 Work days per week days Cooled
 Both

Fuel Cost: Natural Gas
 Fuel \$ Per KWH
 Propane (Default is National Value)
 Electric

Number of Docks:

Location Averages:
 Winter Temp °F Summer Temp °F
 Wind Speed mph
 Heating Degree Days Cooling Degree Days
 Peak Temperature: Coldest °F
 Hottest °F
 Work days per year Days

Dock Information
 Leveler Type: Pit Vertical EOD
 Leveler Size: Width ft Length ft
 Pit Size: Width ft
 Length ft
 Depth ft

Energy Guard Seal: Yes No Brush Seal: Yes No
 Bumper Projection: in Leveler Insulated: Yes No

Door / Seal / Trailer

Door Information
 Door Type: TKO Commercial Sectional
 This Door is insulated: Yes No
 Door Size: Width ft in
 Height ft in

Seal / Shelter Information
 Type: Dock Seal Shelter None

Trailer Information
 Trailer Size: Width ft in
 Height ft in
 Trailer Door Type: Swing out Roll up

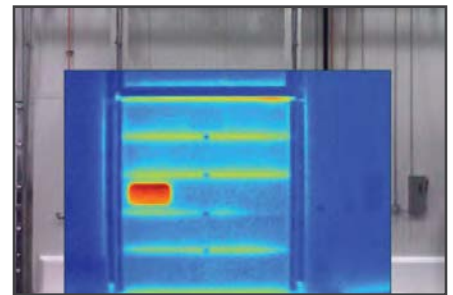
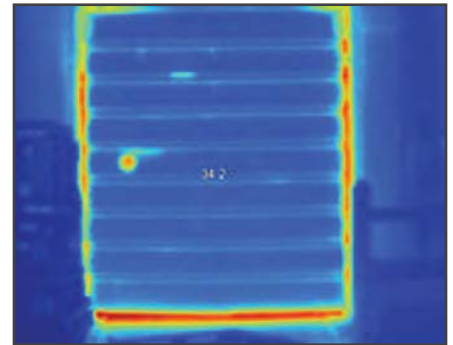
Total Building Loss on Dock
 Daily Loss Per Dock: UA (BTU/Hr-°F)
 Annual Energy Loss Per Dock: (BTU/ YR)
 Dock Annual Cost: \$

Annual Energy Loss Total Building
 Building Annual Cost: \$

Notes: The calculations shown here pertain directly to the dock leveler, dock door, dock seals and their affiliated features. The energy loss calculations do not include loss due to open dock doors without trailers or loss through the interior of the trailer while the trailer doors are open. The calculator assumes there is a trailer at the dock during working hours. Loss calculations include all working & non-working time for entire year.

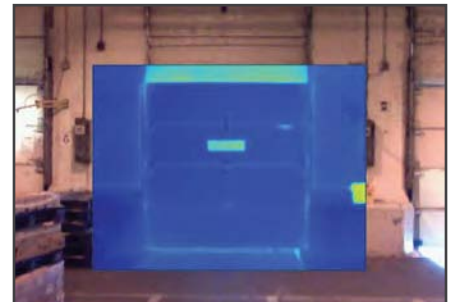
COMPETITIVE DOORS

Loss around door panels



TKO DOCK DOORS

Seals perimeter/no gaps





TRIAL AGREEMENT

TKO® Dock Doors offers a 30 day trial program to prove the quality and strength of our door to new customers. We believe the TKO door will withstand forklift impact yet tightly seal and insulate a dock door opening better than any other door product available. The specific details of the trial are:

- Trial agreement applies to ONE (1) door model per customer facility.
- The trial may include impact testing (Impact testing not applicable on VertiCool model).
- The customer will receive a quotation prior to acceptance of the trial detailing the cost of material, freight and installation that will be invoiced at successful completion of trial. (This may include a hand written door survey proposal)
- At the successful conclusion of the trial, Net 10 day payment terms apply to the total invoice amount shown below.
- Should an issue arise with the door, TKO Dock Doors must be informed of the reason(s) why. At that point, TKO must be given the opportunity to rectify the situation and bring the door into compliance for approval. If the door still does not perform as expected, it will be removed at no charge to the customer.

Company: _____

MODEL:

- WelterWeight
- CruiserWeight
- ThermalWeight
- VertiCool

Door Size: _____

OPTIONS:

- Super Bottom Panel
- Impact-A-Track _____ft
- Window: _____
- Other: _____

Door Number: _____

Salesperson: _____

Material Price: \$ _____

Installation Price: \$ _____

Shipping & Handling Estimate: \$ _____

Total Invoice: \$ _____

(sales tax not included)

At the conclusion of a successful trial, customer will pay the agreed total invoice above under the standard payment terms of Net 10 Days.

Customer Signature

Date

PO Number (Required)

Signature authorizes TKO Dock Doors to manufacture and install a TKO door on a trial basis. Invoice will be sent, based upon the terms & conditions of this contract, upon shipment of the door. An acknowledgement will precede shipment confirming product specifications, terms & conditions and price (not including freight).

TKO Dock Doors | N56 W24701 Corporate Cr. | Sussex, WI 53089 | tel: 1-877-408-6788

fax: 1-262-820-1273 | email: sales@tkodoors.com | web: www.tkodoors.com



WELTERWEIGHT™

The most versatile and cost-effective impactable door for facilities with:

- Moderate panel damage
- Moderate to severe track damage
- Greater budget sensitivity



DESIGN BENEFITS

1. Full height 12 gauge galvanized steel track
2. 2" thick insulated, foam core panel with damage resistant polymer interior facing
3. Heavy-duty, retractable plungers allow door to release from the opening upon impact
4. Tight perimeter weatherseal incorporates a brush seal and loop seal to eliminate air infiltration and light gaps. Both are attached to the panel versus the door jamb, keeping it out of harms way to provide a consistent seal



Available 5-year Track Impact Warranty
(Impact-A-Track option only)



Available 2-year Panel Performance Warranty
(Super Bottom Panel option only)

COMMON OPTIONS:



Dual Side Seals

Brush seal and loop seal eliminate air infiltration and light gaps.



Impact-A-Track™

Provides total protection against the most abusive impacts, available in 3', 6' or full height.
(5-year impact warranty)



Super Bottom Panel

Adds strength and durability where most impacts occur. 2-year performance warranty.



Clear Vision Panel

21" high, 1 3/4" thick Clear Vision Panel that runs the full width of the door and provides full visibility outside the facility.



CRUISERWEIGHT™

The industry's most rugged door, providing total knockout protection for facilities with:

- Moderate to severe panel damage
- Moderate to severe track damage
- Higher wind load requirements



DESIGN BENEFITS

1. Full height 12 gauge galvanized steel track standard
2. 1 - 3/4" thick insulated, foam core panel with damage resistant polymer interior panel skin
(2-year performance warranty)
3. Heavy-duty, retractable plungers allow door to release from the opening upon impact
4. Tight perimeter weatherseal eliminates air infiltration and light gaps. Seals are attached to the panel versus the door jamb, keeping them out of harms way to provide a consistent seal



Available 5-year Track Impact Warranty
(Impact-A-Track option only)



Up to 2-year Panel Impact Warranty

COMMON OPTIONS:



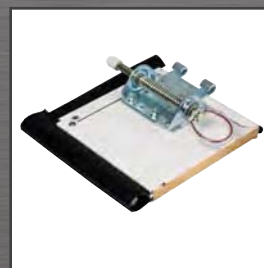
Impact-A-Track™

Provides total protection against the most abusive impacts, available in 3', 6' or full height.
(5-year impact warranty)



PowerHouse™ Panel

Polycarbonate interior facing provides superior protection against severe impacts.
(2-year Impact Warranty)



Non-Insulated Panel

3/4" thick, 7-ply wood core panel durable enough to handle heavy impacts.



Clear Vision Panel

21" high, 1 3/4" thick Clear Vision Panel that runs the full width of the door and provides full visibility outside the facility.



THERMALWEIGHT™

Specifically designed for perishable and cold storage facilities with:

- Moderate panel damage
- Moderate to severe track damage
- Higher R-value requirements



DESIGN BENEFITS

1. Full height Impact-A-Track™ provides total protection against the most abusive impacts from top to bottom
(5-year impact warranty)
2. 4" thick insulated, foam core panel with damage resistant polymer interior facing
3. Heavy-duty, retractable plungers allow door to release from the opening upon impact
4. Tight perimeter weatherseal incorporates a double loop seal to prevent energy loss. Seal is attached to the panel versus the door jamb, keeping it out of harms way to provide a consistent seal
5. The unique double compression side and bottom seals provide an energy efficient seal that separates cold interior temperatures from the ambient exterior temperatures that are common with all refrigerated facilities



Standard 5-year Track Impact Warranty



Available 2-year Panel Performance Warranty
(Super Bottom Panel option only)



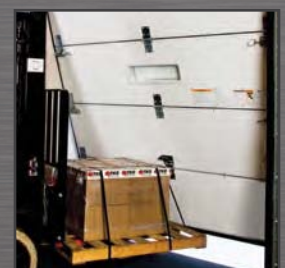
4" Thick Moisture Resistant Panel

Closed-cell foam core provides high R-value and damage resistant fiberglass interior facing for consistent temperature control.

COMMON OPTIONS:



Thermal Pane Rectangular Window
Ideal for cold storage environments.



Super Bottom Panel
Adds strength and durability where most impacts occur. 2-year performance warranty.

TKO WIND LOAD PACKAGE

The TKO CruiserWeight with Wind Load Package is the only Sectional Knockout Door approved for high wind load environments, providing facilities in hurricane-susceptible locations with a safe and durable solution for loading dock doors. Able to withstand pressures of +52 and -67.5 pounds per square foot, the TKO door has received Florida Building Code Approval #FL13014 as well as the industry's first Notice of Approval, NOA #11-0513.04 Miami-Dade County, Florida.



Highlights of this package include:

- Polycarbonate interior skin with 2-year impact warranty
- Full-height, reinforced Impact-A-Track™ with 5-year track impact warranty
- Slide locks with lockout pins, attached to the track, secure the door during high-wind events

Consult your TKO door specialist for more information and a free evaluation of your environment.

Options & Accessories



Double Knockout Header

Allows the door to knock out in both directions at the top of the door opening.
(vertical lift track only)



Bottom Brush Seal

In addition to bottom loop seal for maximum perimeter seal



E-Lift CounterWeight

Adjustable system eliminates the need for counterbalance springs.



Single Pane Vented Window

An optional single pane vented window can be added as an alternative to traditional full sized screen doors to provide air circulation without compromising security.

TKO VertiCool: The Industry's First Door Specifically Designed for Use with Vertical Storing Dock Levelers

The TKO VertiCool combines the superior energy efficiency of a Vertical Rise Freezer Door with the cost effectiveness of a standard sectional door.

Design Benefits:

- R-23 insulated panels
- 50% reduction in panel joints
- Dual compression weatherseals
- Polymer thermal break track
- Unique heavy-duty fixed plungers



EXPERIENCE TKO'S POSITIVE IMPACT FOR YOURSELF



VIP Program: TKO invites you to visit our modern showroom in Dallas, Texas, to view our full line of doors and other loading dock equipment. Our Visit-in-Person (VIP) program offers a unique opportunity to gain hands-on experience with our products, tour the manufacturing floor and interact with industry experts in a comfortable environment.

Not Much on Travel? We'll bring the proof to you

TKO Demo Trucks: Our TKO Door Specialists will visit your facility in person to show you how TKO doors can make a difference at your facility. From our complimentary Energy Efficiency Analysis to our custom TKO demo trucks, you'll see just how TKO doors can stand up to whatever comes their way.



Mobile Showroom: Our 53-foot completely enclosed and temperature-controlled trailer features over 20 full-sized, fully functional dock equipment demo units, including TKO Doors. Our Mobile Showroom travels across the country all year, and will visit your facility whenever it's in the area.



TKO Dock Doors
N56 W24701 Corporate Cr.
Sussex, WI 53089
tel: 1-877-408-6788
fax: 1-262-820-1273
email: sales@tkodoors.com
web: www.tkodoors.com

1-877-408-6788
www.tkodoors.com

A continuing research program is in effect at TKO Dock Doors. We reserve the right to incorporate product improvement at any time without prior notice.

